

**Annual Activity Report of the IUPPS Commission**  
**Theory and Methods in Landscape Archaeology – Archaeogeography**  
**December 2018**

**1- 2018 XVIII<sup>th</sup> Congress in Paris**

Sandrine Robert was involved in the organisation committee of the 18<sup>th</sup> congress on behalf of EHESS and the *Landscape commission* organised two sessions in the congress :

- Session IX – 1: *Resilience and Landscape: The Use of Resilience Framework in Landscape Archaeology and Archaeogeography*. Sandrine Robert org.

This session was held on 5<sup>th</sup> June 2018 and was made up of seven papers (see schedule in annex 1).

- Session II -3. *Systèmes agropastoraux et dégradations climatiques. Analyse intégrée des données archéologiques et paléoenvironnementales/ Agropastoral and climate change*. Christophe Petit, Michelle Elliott, Nicolas Bernigaud, Cyril Marcigny org.

This session was held on Thursday 7<sup>th</sup> June 2018 and was made up of twelve papers (see schedule in annex 2).

**2- Professor Invitation**

Landscape commission participated to the invitation of professor John Weishampel by EHESS for one month (June 2018).

John Weishampel is Professor in the Department of Biology of University of Central Florida (UCF), in the Geospatial Analysis & Modeling of Ecological Systems Laboratory (GAMES Lab). He is Associate Dean and Director of Interdisciplinary Studies in the College of Graduate Studies. His research focuses on Global Change and Landscape Ecology.

He delivered four lectures and Landscape commission organized a conference followed by a workshop on June 15 with UMR *Arscan* and Labex *Dynamite* (Annex 3).

**3 - Annual meeting**

The annual meeting of the commission took place on 5<sup>th</sup> June 2018. It mainly addressed the preparation of the 19<sup>th</sup> congress and the introduction of the new members. .

Attendees: Peter Chowne, Benoit Hazard, Julie Gravier, Léa Hermenault, Sandrine Robert, Benoit Sittler, Jérôme Spiesser, John Weishampel

Excused: Michael Doneus, Fanny Gosselin-Trouvé, Paul Lane, Ana Lucia Herberts, Christophe Petit

A. Statutory election of the board of the commission: applications, discussions and voting;

The Board have been re-elected (8 votes)

President / Présidente: Sandrine ROBERT, EHESS, UMR Géographie Cités,  
sandrine.robert@ehess.fr

Vice-President/Vice-Présidente : Ana Lucia HERBERTS, Scientia, Florianopolis (Brasil)  
anah@terra.com.br

Secretary/Secrétaire: Benoit SITTLER, Freiburg University (Germany)  
benoit.sittler@landespflge.uni-freiburg.de

## B. Membership applications, discussions and vote

Sandrine Robert cited the new members elected in the annual meeting held at Nanterre University on 10<sup>th</sup> November 2016:

- Dr. Benoit Hazard, Anthropologist, researcher at CNRS (CR1), Ecole des Hautes Etudes en Sciences Sociales (EHESS) Paris, co-editor-in-chief of *Cahiers d'études africaines*. His work focuses on the future of pastoral landscapes by studying the interactions between pastoralism, conservation and large scale investment in Kenya rangeland.
- Julie Gravier has earned her PhD from Paris I – Panthéon-Sorbonne University, in Geography. She studies geography and archaeology . Her PhD focused on settlement and spatial systems in the North of France from the Antiquity until nowadays.
- Léa Hermenault has earned her PhD from Paris I – Panthéon-Sorbonne University, in Archaeology. She studies archaeogeography, medieval and modern archaeology and history. Her focus is on the historical morphology of Paris.

In 2018, the IUPPS Board required that we update the list of members of our commission, according to the dues roll.

The following are considered as members of the commission in June 2018:

Name / Nom	Institution / Institution	Email
Michael Doneus	University of Vienna, Austria	<a href="mailto:Michael.Doneus@univie.ac.at">Michael.Doneus@univie.ac.at</a>
Christophe Petit	Université de Paris I (France)	<a href="mailto:Christophe.Petit@univ-paris1.fr">Christophe.Petit@univ-paris1.fr</a>
John Weishampel	University of Central Florida (USA)	<a href="mailto:jweisham@mail.ucf.edu">jweisham@mail.ucf.edu</a>
Fanny Gosselin	Conseil général du Val- d'Oise	<a href="mailto:fanny.gosselin@valdoise.fr">fanny.gosselin@valdoise.fr</a>

Julie Gravier	University of Paris I	<a href="mailto:Julie.Gravier@malix.univ-paris1.fr">Julie.Gravier@malix.univ-paris1.fr</a>
Léa Hermenault	University of Paris I	<a href="mailto:lea.hermenault@univ-paris1.fr">lea.hermenault@univ-paris1.fr</a>
Martin Fera	University of Vienna	<a href="mailto:martin.fera@univie.ac.at">martin.fera@univie.ac.at</a>
Dr Peter Chowne	University of Greenwich	<a href="mailto:pchowne@mac.com">pchowne@mac.com</a>
Benoit Hazard	CNRS-EHESS (IIAC) Paris	<a href="mailto:Benoit.hazard@ehess.fr">Benoit.hazard@ehess.fr</a>

The following are considered as Former members: Andrew Fleming (UK), Nicolas Verdier (France), H el ene Noizet (France), Silvia Cop e (Brazil), Felipe Criado Boado (Spain), Dominique Schwarz (France), M. Concei o Lopes (Portugal), Ricardo Gonz alez Villaescusa (France), Mario Enrique Hernandez (France), Tatsunori Kawasumi (Japan) deceased

Two new members were elected during the 5<sup>th</sup> June 2018 meeting in Paris (8 votes):

- Paul Lane is Professor of Global Archaeology, University of Uppsala, and former President of the Society of Africanist Archaeologists (2008-10). He served as Director of the British Institute in Eastern Africa, Nairobi (1998-2006), before joining the University of York (2007-13) as a senior lecture and coordinator of the *Historical Ecologies of East African Landscapes* project funded by a Marie Curie Excellence Grant. His current research builds on this previous work, with an emphasis on climate change and resilience.
- 
- Jer me Spiesser has earned his PhD from Paris I – Panth eon-Sorbonne University, in Archaeology. He studies archaeogeography. He investigates the reconstruction of commercial networks in the lower Seine valley in Normandy (France) in proto-historical times.

#### **4. Publication of the proceedings of the 18th Congress for the sessions of the commission**

The papers of Session IX – 1 (Landscape commission): *Resilience and Landscape: The Use of Resilience Framework in Landscape Archaeology and Archaeogeography* must be published before the next IUPPS Congress. We propose to follow the recommendations of the IUPPS Board and the Steering committee of the 18th IUSPP Congress: “The proceedings of the XVIII<sup>o</sup> UISPP congress (which are under the copyright of the congress and the authors) as a complete series of volumes, as an UISPP publication and with free open access without embargo delay.”<sup>1</sup> Archaeopress Editor (<http://www.archaeopress.com>) which published the

---

<sup>1</sup> UISPP rule of publications for the proceedings of the XVIII<sup>o</sup> Congress, June 2018.

two previous sessions of the Landscape commission, may well be the publisher. But any other editor that follows the rule of the proceedings of the XVIII° UISPP congress could be proposed.

### **5. Preparation of the XIX UISPP Congress 2020;**

We propose to explore the theme of “Landscape of Movement”<sup>2</sup>:

- the role of circulations in the construction of territories, and in the structuration and resilience of landscapes. This theme follows up the session held in Burgos about the morphogenetic function of water that structures networks and territories in transcultural and diachronic ways.

Paris 19 décembre 2018

Sandrine Robert, President of the IUSPP Commission “Theory and methods in Landscape archeology – Archeogeography”

---

<sup>2</sup> Snead, James E., Clark L. Erickson, et J. Andrew Darling. *Landscapes of Movement: Trails, Paths, and Roads in Anthropological Perspective*. Philadelphia: University of Pennsylvania Press, 2009..

ANNEX 1

XVIII<sup>e</sup> IUSPP Congrès (Paris 2018)

Session IX – 1 (Landscape commission):

*Resilience and Landscape:*

*The Use of Resilience Framework in Landscape Archaeology and Archaeogeography*

Sandrine ROBERT (Ehess) org.

MARDI 5 JUIN 2018, Salle 216

Université Paris 1 Panthéon-Sorbonne, 12, place du Panthéon, 75231 - Paris cedex 05

14h : Accueil/Welcome

14h10 : Sander Van der Leeuw, Arizona State University: *Resilience: The importance of the long term*

14h30 : Sandrine Robert, EHESS: *Applying the concept of panarchy in archaeogeography: the example of resilience of routes in the longue durée.*

14h50 : John Weishampel, University of Central Florida, Adrian Chase, Arizona State University, Arlen Chase, University of Nevada Las Vegas, Diane Chase, University of Nevada Las Vegas: *Estimating resiliency gains from agricultural terracing in the ancient Maya polity of Caracol*

15h10 : Paul Lane, Uppsala Universitet: *Weathering climate change in East Africa: Archaeological perspectives on local and regional resilience, vulnerability and sustainability during the late Holocene.* Paper red by Nik Petek, University of Uppsala.

15h30 : Benoit Hazard, CNRS, Institut Interdisciplinaire d'Anthropologie du Contemporain (IIAC) : *Quelle résilience dans les paysages contestés de l'anthropocène? Ressources, énergies et changements socio-écologiques dans la vallée du rift.*

15h50 : Lea Hermenault, Archéologies et Sciences de l'Antiquité (UMR 7041), Nanterre : *Comprendre les mécanismes de résilience du réseau viaire parisien aux périodes médiévale et moderne.*

16h10 : Pause/Break

16h20 : Jérôme Spiesser, Université Paris 1, Panthéon-Sorbonne : *Le concept de résilience au service d'une reconstruction des réseaux commerciaux protohistoriques : Le cas de la basse vallée de la Seine (Normandie)*

16h40 : Karen Niskanen, Ville Hakamäki, Aki Hakonen, University of Oulu, Finland: *Neolithic – Iron Age in Northern Finland: Landscape and resilience*. Cancelled by the authors

17h : conclusion

17h15 : Réunion annuelle de la commission Landscape/ Annual meeting of Commission Landscape.

## ANNEX 2

Session II-3. Systèmes agropastoraux et dégradations climatiques. Analyse intégrée des données archéologiques et paléoenvironnementales/ Agropastoral systems and climate change. Crossed analysis of archaeological and palaeoenvironmental data

Organizers : Christophe Petit, Michelle Elliott, Nicolas Bernigaud, Cyril Marcigny  
Jeudi /Thursday 7th

8h00 - 8h30 Registration

8h30 - 8h40 Introduction 10 mn

8h40 - 9h00 Nicolas BERNIGAUD, Michelle ELLIOTT, Christophe PETIT, Épistémologie de la relation société-climat : comment intégrer des données historiques, archéologiques et paléoclimatiques ?

9h00 - 9h20 Louise Purdue, Julien Charbonnier, Sophie Costa, Mael Crépy, Emmanuelle Régagnon, Carine Calastrenc, Thomas Sagory, Aline Garnier, Hatem Djerbi, Clément Virmoux, Anne Benoist Late Holocene Oases of South-East Arabia: emergence and agricultural management of the mountainous palm grove of Masafi (UAE)

9h20 - 9h40 Tara Beuzen-Waller, Guillaume Gernez, Jessica Giraud, Eric Fouach, Evolution d'un secteur de marge aride du Paléolithique à l'âge du Fer : occupation du territoire et variations climatiques à Adam, Sultanat d'Oman

9h40 -10h00 Yolanda Carrión Marco, Guillem Pérez Jordà, Farid Kherbouche, Leonor Peña-Chocarro, Slimane Hachi Neolithic woodland management practices at Gueldaman Cave 1 (Algeria). Plant evidence for fuel and fodder.

10h00 -10h20 Reyes Luelmo Lautenschlaeger, Sebastián Pérez Díaz, José Antonio López-Sáez Mid-mountains and human being: resources and co-evolution. Shaping the landscape in Toledo Mountains (Central Spain) since Early Neolithic

10h20-10h40 Vasiliki Andreaki, Jordi Revelles Lopez (poster) Climate change and site formation processes in a Neolithic lakeside settlement. Integration of geoarchaeological and palaeo-environmental data at La Draga (Girona, NE Iberian peninsula).

11h00 - 11h20 Tim KOHLER, R. Bocinsky, Laura Ellyson Tales from the Inequality Possibility Frontier: Equality, Production, Population and Climate in the Northern Pueblo (US) Southwest

11h20 - 11h40 Cyril MARCIGNY .... et ceux qui creusent. Toi, tu creuses. (... and those who dig. You dig.) Le fossé, le climat, la société.

11h40 - 12h00 Olivier Buchsenschutz Confrontation du témoignage des textes et de l'archéologie et des courbes sur l'évolution du climat de l'âge du Fer en France ; Confrontation of the textual archaeological data with the curves on the climate change of the age of iron in France

12h00 - 12h20 Christophe Petit, Nicolas Bernigaud La production des céréales dans le Bassin parisien entre 400BC et 600 AD estimées d'après les données dendroclimatiques. Premières confrontations avec les données archéologiques.

12h20 - 12h40 Michelle ELLIOTT, Christopher Fisher, Ben Nelson, Paula Turkon, Sturt Manning Climate, agriculture, and changing landscapes in the Malpas Valley, Zactecas: an interdisciplinary approach to untangling the roots and consequences of Classic period settlement on Mesoamerica's northern frontier (AD 200-900)

12h40 - 13h00 Sander Van der Leeuw An evolutionary comparaison between ancient and modern agricultural communities

13h00 - 14h00 Lunch



## ANNEX 3

Conférences John Weishampel, invité EHESS du 1er au 31 juin 2018 par Sandrine Robert et Alice Ingold

John Weishampel is Professor in the Department of Biology of University of Central Florida (UCF), in the Geospatial Analysis & Modeling of Ecological Systems Laboratory (GAMES Lab). He is Associate Dean and Director of Interdisciplinary Studies in the College of Graduate Studies. His research focuses on Global Change and Landscape Ecology.

### *- Ecology and Monitoring MacroSystems: the National Ecological Observatory Network*

13 juin 2018 : Conférence donnée dans le cadre du séminaire de recherche d'Alice Ingold « Administrer les « ressources naturelles », XIXe-XXe siècles », EHESS, 105 bd Raspail 75006 Paris et de l'Atelier de l'Anthropocène de Benoît Hazard, de 15h à 17h (Ehess, salle AS1\_24, 54 Bd Raspail 75006 Paris)

### *- Monitoring human activities and consequences on ecological systems depicted by satellite remote sensing of artificial night lights.*

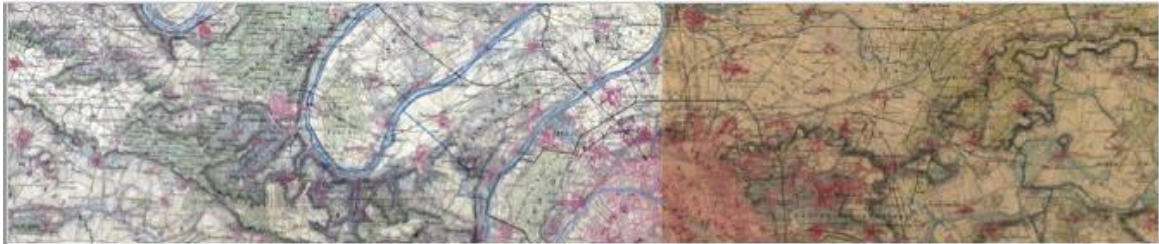
14 juin 2018 : Conférence donnée dans le cadre du séminaire de recherche de Marie-Vic Ozouf-Marignier et Nicolas Verdier « Géographie et sciences sociales », de 15 h à 17 h (Ehess, salle 7, 105 bd Raspail 75006 Paris)

### *- Application of LiDAR to Measure Environmental Parameters*

15 juin 2018 : Conférences donnée dans le cadre du Labex Dynamite (Laboratoire d'Excellence « Dynamiques Territoriales et Spatiales »), ArcheoFab-Bassin Parisien et IUSPP-Commission *Landscape*, de 10h à 12h (Maison de l'Archéologie et de l'Ethnologie, René-Ginouvès, 21, allée de l'Université, F-92023, Nanterre Cedex , Salle 2). Cf. affiche page suivante

### *- Ecological Effects of Landuse Legacies*

21 juin 2018 : Conférence donnée dans le cadre du séminaire de recherche de Sandrine Robert « Le paysage comme trace : un laboratoire pour le concept de résilience », 13 h à 15 h (Ehess, salle 7, 105 bd Raspail 75006 Paris)



Journée organisée dans le cadre du Labex Dynamite (Laboratoire d'Excellence « Dynamiques Territoriales et Spatiales »), GT « Systèmes de peuplement sur le temps long » et « Changements environnementaux et sociétés dans le passé » avec ArcheoFab-Bassin Parisien et IUSPP commission Landscape.

## Application of LiDAR to Measure Environmental Parameters

Par John Weishampel

Department of Biology of University of Central Florida, Orlando  
et professeur invité à l'Ehess - juin 2018



La conférence se tiendra de 10 h à 12 h, salle 2 RDJ  
L'après-midi (14h-16h) sera consacré à un échange avec John Weishampel autour des travaux menés par des chercheurs français sur différentes aires culturelles (Europe, Amérique centrale...).

**Journée d'étude / Workshop**  
**le 15 juin 2018 de 10 h à 16 h,**  
**MAE, 21 allée de l'université 9203230 Nanterre Cedex**  
**Salle RDJ 2**  
**Entrée libre**

Contacts : Laurent Costa ([laurent.costa@mae.cnrs.fr](mailto:laurent.costa@mae.cnrs.fr)), Sandrine Robert ([sandrine.robert@ehess.fr](mailto:sandrine.robert@ehess.fr))

